



Long Term Condition Management Visuals

April 2025

Option 1

The Waiting List Challenge

NHS waiting list for elective treatment stands at **7.43 million cases**:

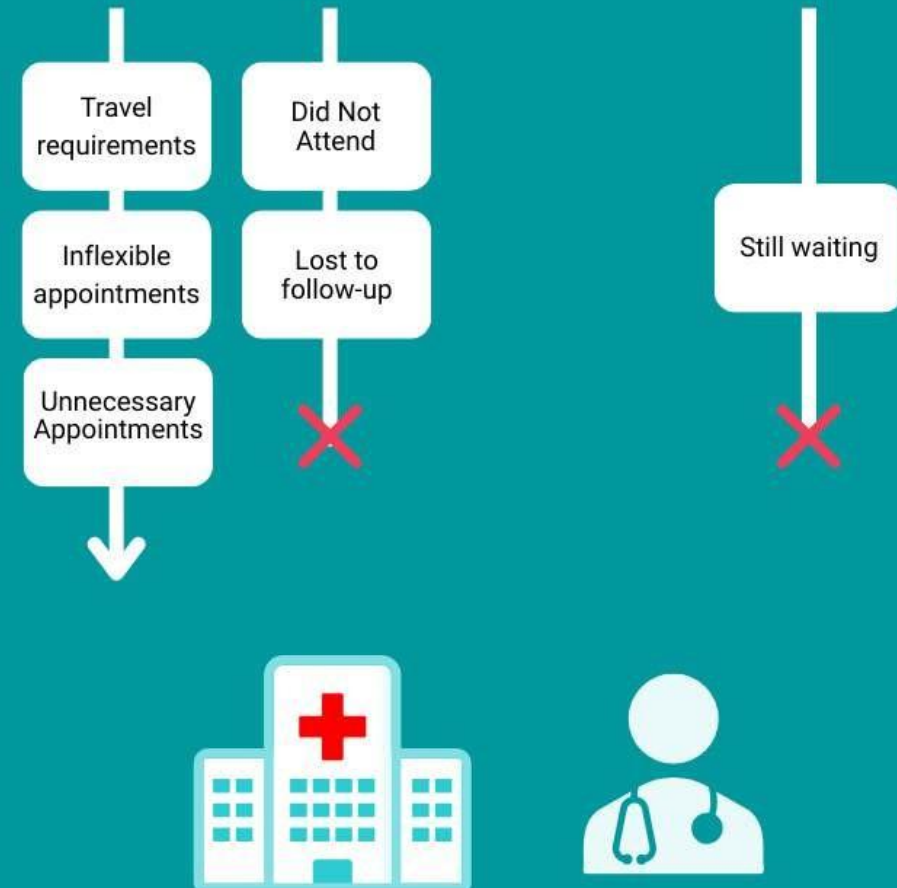
- The 18-week treatment target hasn't been met since 2016.
- The population is projected to grow, leading to an increase in complex care needs.
- Shortage of clinicians available to meet the demand for care.
- Rising agency and bank staff expenses are becoming necessary to manage the backlog of appointments.



Patients seen



Waiting list patients



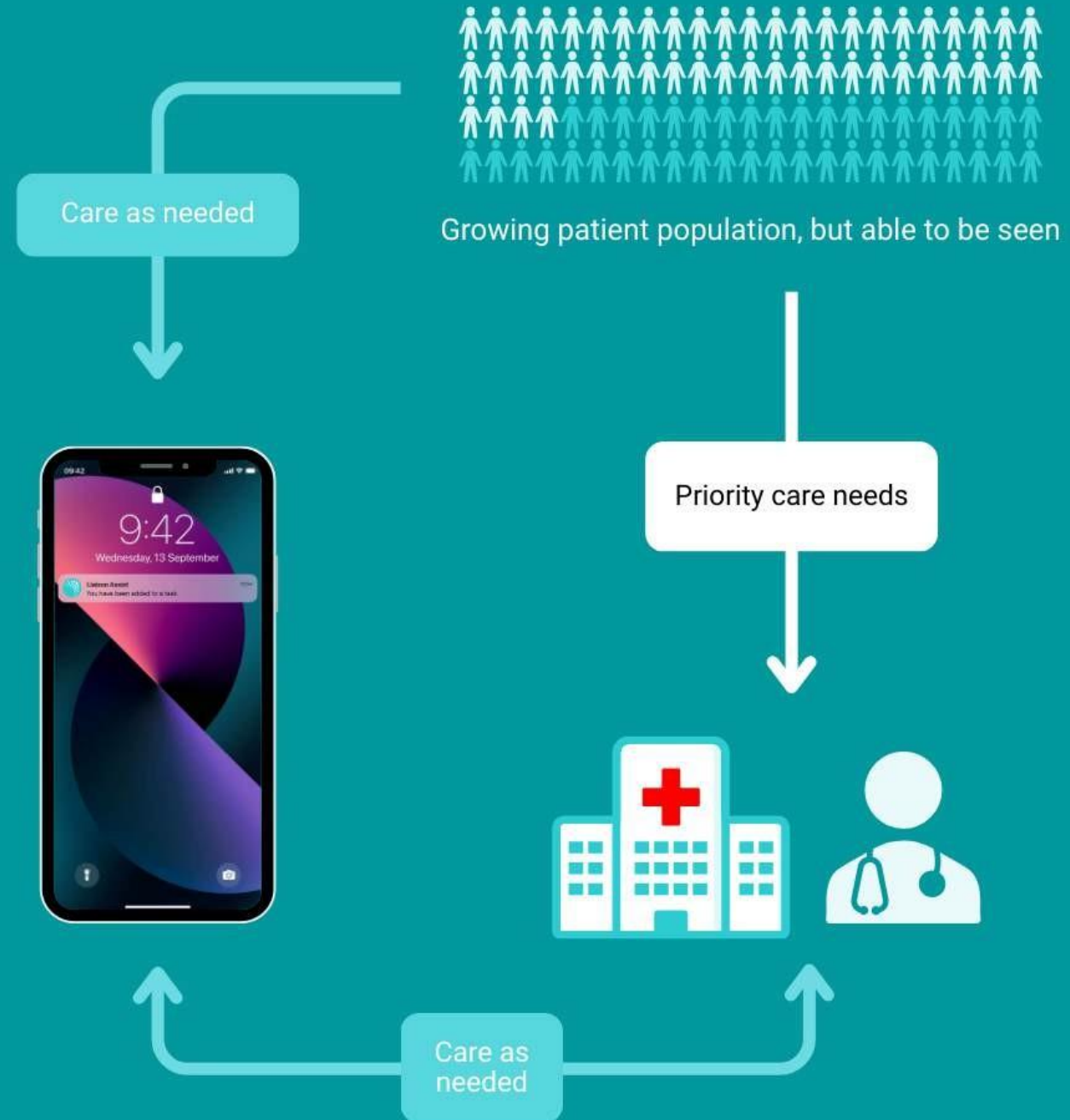
Solution:

Create capacity for more outpatient appointments every month.

Delivered by a digital tool that sits in clinicians' hands, Liaison Assist is improving the management of long-term conditions.

The solution has the potential to save X Trust / Region **£X** over the next three years.

It is trusted by clinicians and loved by patients.



Option 2

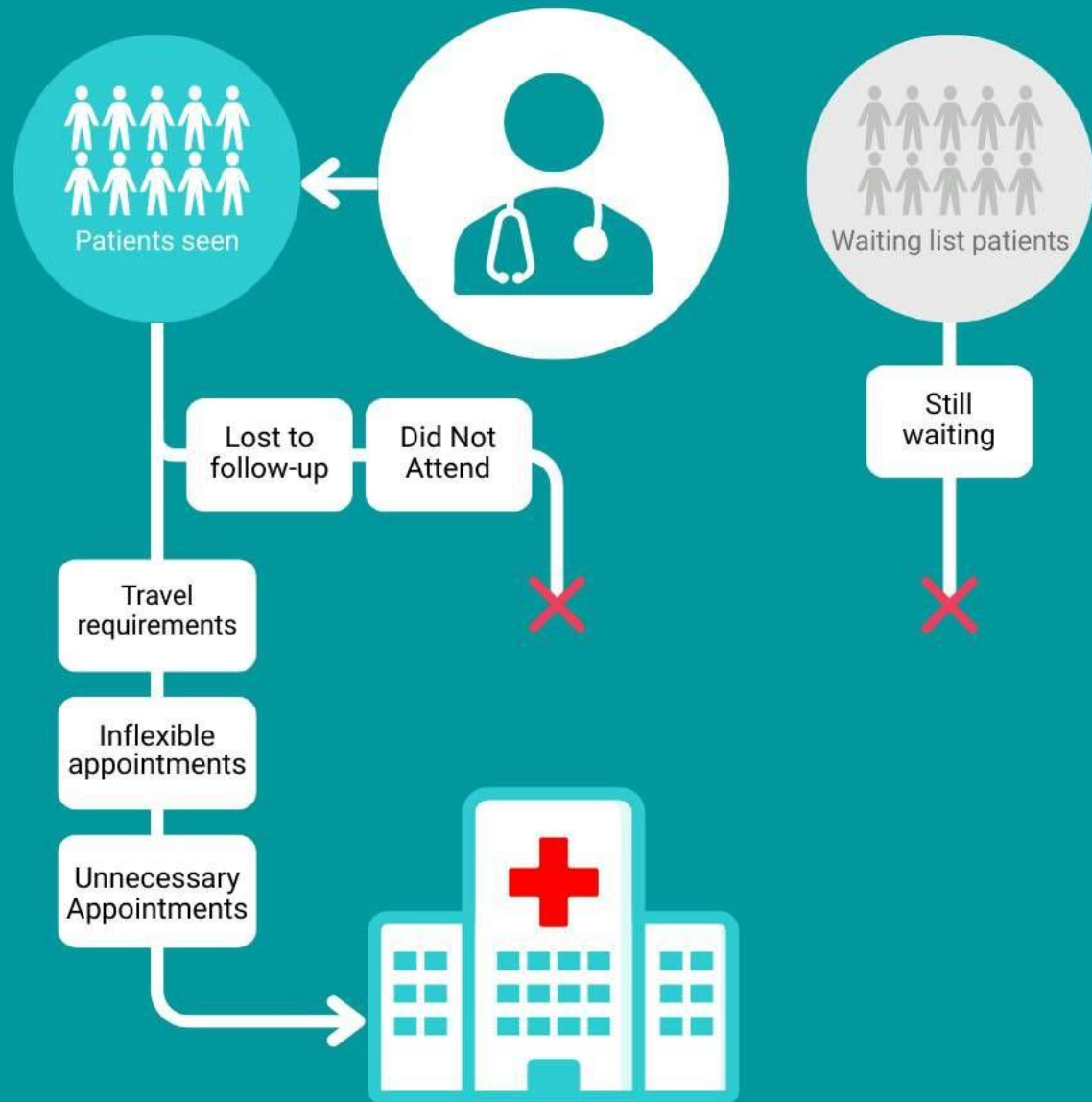
The Waiting List Challenge

The NHS waiting list for elective treatment stands at **7.43 million cases**:

- The 18-week treatment target hasn't been met since 2016.
- The population is projected to grow, leading to an increase in complex care needs.
- Shortage of clinicians available to meet the demand for care.
- Rising agency and bank staff expenses are becoming necessary to manage the backlog of appointments.



Current



Future

