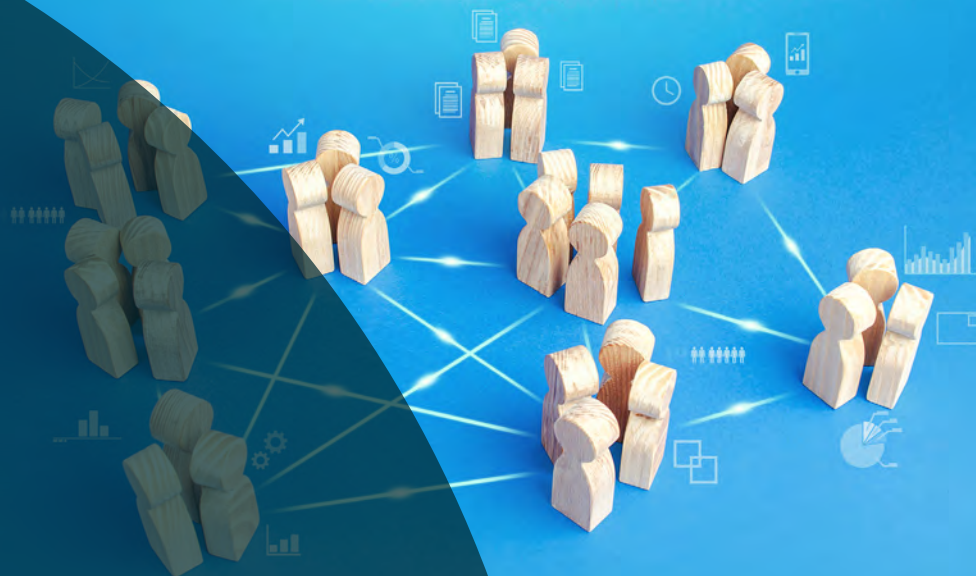


mii

Collaborative Bank



**Increased flexibility
for a changing
workforce**



**Realise cost savings
through lesser need
for agencies**



**Greater
workforce
planning**



**Collaborate with
neighbouring
trusts**



**Continuity
of care**

A collaborative staff bank is an effective way of enabling cross-system working in your region.

We are currently seeing Sustainability and Transformation Partnerships (STPs) transforming into Integrated Care Systems (ICSs), a new model of care spanning the broad healthcare pathways across regions, which will benefit from the streamlined workforce management provided via collaborative staff banks.

The NHS People Plan encourages organisations to move to using collaborative bank models to assist in recruiting and deploying staff members across geographical areas.

The central priority for all NHS organisations is the improvement in patient safety and continuity of care. By improving the availability and deployment of the clinical workforce via a collaborative bank, to ensure that the right staff are available to patients at all times, patients experience a higher quality of care.

Liaison Workforce has both experience and expertise in supporting NHS organisations to effectively collaborate to deliver improvements in workforce planning and management. Our people, technology and data enable cross-system working, including collaborative banks, giving medical staff the flexibility to work across different organisations as well as facilitating the sharing of information such as HR records and statutory and mandatory training.

In October 2020, Liaison Workforce facilitated the launch of the Southwest Peninsula Collaborative bank, bringing together five NHS healthcare providers from across the South West of England to increase the flexibility they can offer for clinical staff; delivering savings and increasing the quality of care to patients across the region.

For more information go to www.swnhsbank.net

Working with the Lead Employer Trust (LET), Liaison Workforce designed and facilitated a collaborative bank (Flexishift) in the North East and North Cumbria – the first of its kind.

Utilising our own software, app-based technology and onsite staff presence, we continue to deliver tangible results.

Eight trusts now form part of the 'Flexishift' collaborative bank, with 1,055 doctors registered across 35 specialties.

For more information go to www.nhsflexishift.co.uk.

To find out how mii Collaborative Bank could benefit your organisation, please get in touch at info@liaisongroup.com



Changing the global
health economy